

# THE POWER YOU LIVE BY



## Caterpillar® Marine Generator Sets



# Broadest Product Line • Single Source Support.

Even on a good day, you have enough on your mind without worrying about the reliability of your marine generator sets. They need to perform day in and day out – plain and simple.

With over 80 years of marine power experience behind them, Caterpillar marine generator sets are built to provide dependable, efficient service under extreme conditions.

They combine proven designs and manufacturing methods with the latest technology, such as advanced electronic control, to deliver more power and greater efficiency, while offering enhanced monitoring capabilities.

So even when your day turns out to be less than perfect, you can count on Caterpillar to deliver the power you live by.



**■ 3056**  
84-99 kW<sub>e</sub>  
105-124 kVA



**■ C2.2**  
17.5-30 kW<sub>e</sub>  
18-37 kVA



**■ C1.5**  
11-14.5 kW<sub>e</sub>  
11-18.1 kVA



**■ C4.4**  
38-99 kW<sub>e</sub>  
47-123 kVA



**■ C9**  
150-250 kW<sub>e</sub>  
188-313 kVA

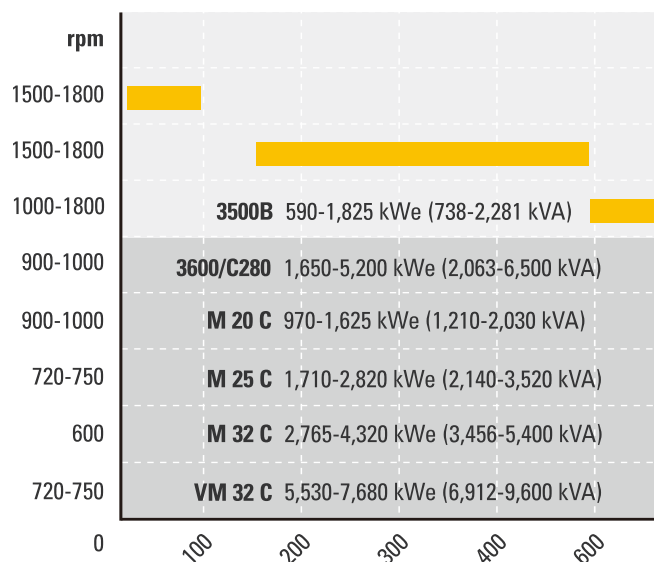


**■ C18**  
275-550 kW<sub>e</sub>  
344-688 kVA



**■ 3400**  
6, 8, 12 cyl  
200-590 kW<sub>e</sub>  
250-738 kVA

## Power to supply all your



High-speed Engines



Medium-speed Engines



## CATERPILLAR MARINE GENERATOR SETS

- ò Built marine tough
- ò Simple connections
- ò Broadest line in the industry
- ò Models from 11 to 7,680 kWe available for everything from pleasure craft to heavy-duty commercial vessels
- ò Heat exchanger, keel, and radiator cooling options available
- ò Same technology as our propulsion engines
- ò Single source for gensets and propulsion engines
- ò Designed for maximum performance and outstanding fuel efficiency

## FACTORY MCS CERTIFIED PACKAGES

- ò Emergency and prime power
- ò 100 percent Caterpillar designed and supported
- ò Same long life as propulsion engines
- ò Worldwide warranty coverage
- ò Single point of contact for installation and product support
- ò Simplifies MCS site approval
- ò Readily available



**3500B**  
8, 12, 16 cyl  
590-1,825 kWe  
738-2,281 kVA



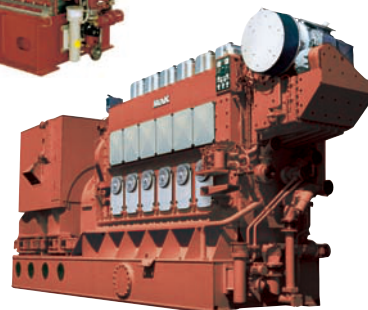
**3600/C280**  
6, 8, 12, 16 cyl  
1,650-5,200 kWe  
2,063-6,500 kVA



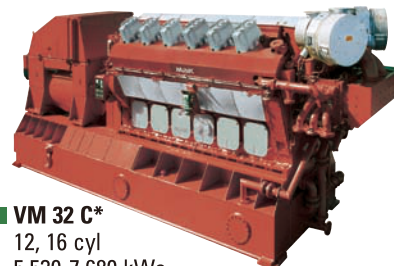
**M 20 C\***  
6, 8, 9 cyl  
970-1,625 kWe  
1,210-2,030 kVA



**M 25 C\***  
6, 8, 9 cyl  
1,710-2,820 kWe  
2,140-3,520 kVA

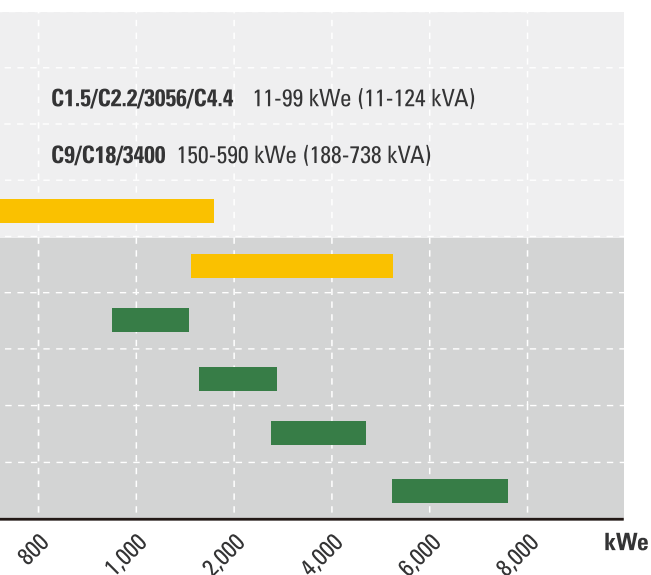


**M 32 C\***  
6, 8, 9 cyl  
2,765-4,320 kWe  
3,456-5,400 kVA



**VM 32 C\***  
12, 16 cyl  
5,530-7,680 kWe  
6,912-9,600 kVA

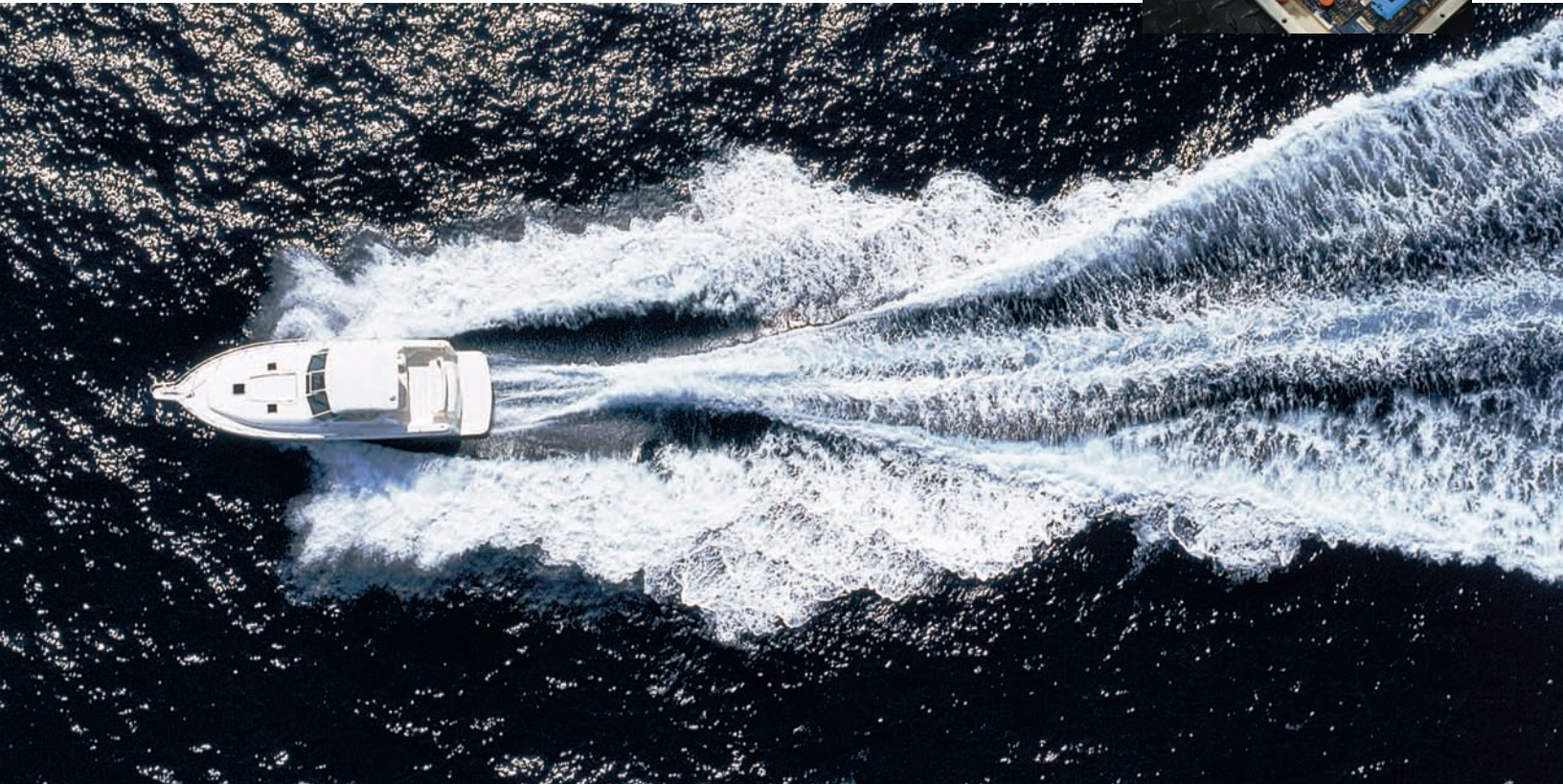
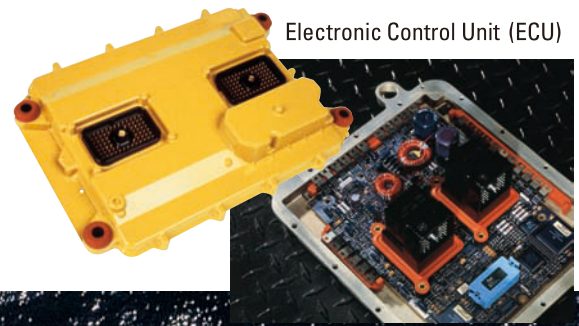
needs from 11 to 7,680 kWe.



\*Heavy Fuel Ready

# ACERT<sup>®</sup> Technology

Compliance with emissions regulations is critical. ACERT<sup>®</sup> Technology provides the answers for today's regulations, as well as the regulations to come.



## ACERT TECHNOLOGY FROM CATERPILLAR

- ò Precisely manages the combustion process
- ò Is capable of meeting future emissions standards
- ò Dramatically enhances performance for fast starts, stable operation, and high power output
- ò Sets the standard for fuel economy
- ò Requires no external emissions reduction devices
- ò Reduces vibration
- ò Features a broad range of ratings

## ACERT TECHNOLOGY FOR MARINE ENGINES

- ò Provides options for future emissions reduction regulations
- ò Allows for incorporating only those elements needed today through its building block components
- ò Includes building block technologies with significant advancements in fuel delivery, electronics, air management, and combustion chamber design
- ò Avoids complications from water injection systems and urea-based catalysts
- ò Provides flexible solutions for the entire Caterpillar and MaK product lines

## MORE BENEFITS OF ADVANCED ELECTRONIC CONTROL

- ò Easily adapts to changing electrical loads
- ò Engine speed is consistent, for quality electric power
- ò Engine load sharing can be accomplished without additional components
- ò Broad range of engines compliant with International Maritime Organization (IMO) and EPA emissions regulations



# Advanced Monitoring Systems

Along with their performance benefits, Cat® engines offer the advantage of advanced electronic monitoring systems. These allow the user to see how the engine is performing at a glance, resulting in top productivity and efficiency.

## CAT® ELECTRONIC MODULAR CONTROL PANEL

The optional Cat Electronic Modular Control Panel (EMCP) is an innovative engine monitoring and display system. The EMCP combines advanced monitoring capabilities and critical safety features into one user-friendly system.

## MARINE CLASSIFICATION SOCIETIES APPROVED PACKAGES

Caterpillar offers generator sets packaged and approved by major Marine Classification Societies. Packaged at the factory, these generator sets eliminate re-packaging at the dealer or shipyard. An easy-to-use controller manages alarm and protection functions, displays and monitors engine sensor levels, logs important events, and communicates to the pilot house.

## EMCP BENEFITS

- ò 100 percent Caterpillar designed and supported
- ò Engine monitoring
- ò Start/stop run controls
- ò Modbus communication
- ò Generator monitoring
- ò Safety shutdown
- ò Alarm systems
- ò Digital LCD display
- ò Troubleshooting codes

## MCS PACKAGING BENEFITS

- ò Certified by major classification societies
- ò Packaged by Caterpillar at the factory
- ò Backlit display with graphical capability
- ò Modbus and J1939 CAN interface support
- ò 12 digital input channels; five analogue, expandable to 11
- ò Engine hour meter with service interval indication
- ò Pre-lube functionality with timer interval



EMCP Display

- ò Optional remote panel operates up to four auxiliary engines
- ò Supports seven languages
- ò Start and backup battery voltage monitoring and alarm set point



MCS Display

## PRODUCT SUPPORT

- ò More than 1,700 dealer locations and 400 Authorized Marine Dealers worldwide
- ò Single point of contact for the entire package
- ò Extended Service Coverage



## 60 Hz Marine Generator Sets

kWe @ 1.0pf	Displacement	rpm	MCS Approved**	MCS Approved Package	Model #
13.5	1.5 liter/91 cu in	1800			C1.5 NA
21.5	2.2 liter/135 cu in	1800			C2.2 NA
30	2.2 liter/135 cu in	1800			C2.2 T

kWe @ 1.0pf	Displacement	rpm	MCS Approved**	MCS Approved Package	Model #
14.5	1.5 liter/91 cu in	1800			C1.5 NA
21	2.2 liter/135 cu in	1800			C2.2 NA
30	2.2 liter/135 cu in	1800			C2.2 T
44	4.4 liter/269 cu in	1800	X	X	C4.4 NA
58.5	4.4 liter/269 cu in	1800	X	X	C4.4 T
76	4.4 liter/269 cu in	1800	X	X	C4.4 TA
99	6.0 liter/365 cu in	1800	X		3056 T
99	4.4 liter/269 cu in	1800	X	X	C4.4 TA
175	8.8 liter/538 cu in	1800	X		C9 TA
215	8.8 liter/538 cu in	1800	X		C9 TA
250	14.6 liter/893 cu in	1800	X	X	3406C TA
250	8.8 liter/538 cu in	1800	X		C9 TA
260	14.6 liter/893 cu in	1800	X	X	3406C TA
315	14.6 liter/893 cu in	1800	X	X	3406C TA
320	14.6 liter/893 cu in	1800	X	X	3406C TA
340	18.1 liter/1106 cu in	1800	X		C18 TA
370	18.1 liter/1099 cu in	1800	X		3408C TA
400	27.0 liter/1649 cu in	1800	X	X	3412C TA
425	27.0 liter/1649 cu in	1800	X	X	3412C TA
425	18.1 liter/1106 cu in	1800	X		C18 TA
500	27.0 liter/1649 cu in	1800	X	X	3412C TA
500	18.1 liter/1106 cu in	1800	X		C18 TTA
550	27.0 liter/1649 cu in	1800	X	X	3412C TA
550	18.1 liter/1106 cu in	1800	X		C18 TTA
590	27.0 liter/1649 cu in	1800	X	X	3412C TA
600	34.5 liter/2105 cu in	1200	X		3508B TA
715	34.5 liter/2105 cu in	1800	X		3508B TA
910	34.5 liter/2105 cu in	1800	X		3508B TA
1030	51.8 liter/3158 cu in	1200	X		3512B TA
1070	51.8 liter/3158 cu in	1800	X		3512B TA
1285	69.0 liter/4210 cu in	1200	X		3516B TA
1360	51.8 liter/3158 cu in	1800	X		3512B TA
1650	111 liter/6773 cu in	900	X		3606/C280-6 TA
1820	111 liter/6773 cu in	900	X		3606/C280-6 TA
1825	69.0 liter/4210 cu in	1800	X		3516B TA
2200	148 liter/9031 cu in	900	X		3608/C280-8 TA
2420	148 liter/9031 cu in	900	X		3608/C280-8 TA
3300	222 liter/13546 cu in	900	X		3612/C280-12 TA
3640	222 liter/13546 cu in	900	X		3612/C280-12 TA
4400	296 liter/18062 cu in	900	X		3616/C280-16 TA
4840	296 liter/18062 cu in	900	X		3616/C280-16 TA

\*\*Individual components are MCS approved.

For emissions information, please contact your local Cat dealer.



## 50 Hz Marine Generator Sets

kWe @ 1.0pf	Displacement	rpm	MCS Approved**	Package	Model #
11	1.5 liter/91 cu in	1500			C1.5 NA
18	2.2 liter/135 cu in	1500			C2.2 NA
25	2.2 liter/135 cu in	1500			C2.2 T

kWe @ 1.0pf	Displacement	rpm	MCS Approved**	Package	Model #
12	1.5 liter/91 cu in	1500			C1.5 NA
17.5	2.2 liter/135 cu in	1500			C2.2 NA
24.5	2.2 liter/135 cu in	1500			C2.2 T
38	4.4 liter/269 cu in	1500	X	X	C4.4 NA
51.5	4.4 liter/269 cu in	1500	X	X	C4.4 T
69	4.4 liter/269 cu in	1500	X	X	C4.4 TA
84	6.0 liter/365 cu in	1500	X		3056 T
86	4.4 liter/269 cu in	1500	X	X	C4.4 TA
150	8.8 liter/538 cu in	1500	X		C9 TA
175	8.8 liter/538 cu in	1500	X		C9 TA
200	14.6 liter/893 cu in	1500	X	X	3406C TA
200	8.8 liter/538 cu in	1500	X		C9 TA
215	14.6 liter/893 cu in	1500	X	X	3406C TA
240	14.6 liter/893 cu in	1500	X	X	3406C TA
245	14.6 liter/893 cu in	1500	X		
275	18.1 liter/1106 cu in	1500	X		C18 TA
280	18 liter/1099 cu in	1500	X		3408C TA
350	27.0 liter/1649 cu in	1500	X		
350	18.1 liter/1106 cu in	1500	X		C18 TA
385	27.0 liter/1649 cu in	1500	X	X	3412C TA
400	18.1 liter/1106 cu in	1500	X		C18 TTA
405	27.0 liter/1649 cu in	1500	X	X	3412C TA
450	18.1 liter/1106 cu in	1500	X		C18 TTA
480	27.0 liter/1649 cu in	1500	X	X	3412C TA
500	27.0 liter/1649 cu in	1500	X	X	3412C TA
590	34.5 liter/2105 cu in	1000	X		3508B TA
630	34.5 liter/2105 cu in	1500	X		3508B TA
800	34.5 liter/2105 cu in	1500	X		
880	51.8 liter/3158 cu in	1000	X		3512B TA
965	51.8 liter/3158 cu in	1500	X		3512B TA
1180	69.0 liter/4210 cu in	1000	X		3516B TA
1200	51.8 liter/3158 cu in	1500	X		3512B TA
1460	69.0 liter/4210 cu in	1500	X		3516B TA
1600	69.0 liter/4210 cu in	1500	X		3516B TA
1760	111 liter/6773 cu in	1000	X		3606/C280-6 TA
1940	111 liter/6773 cu in	1000	X		3606/C280-6 TA
2350	148 liter/9031 cu in	1000	X		
2600	148 liter/9031 cu in	1000	X		3608/C280-8 TA
3520	222 liter/13546 cu in	1000	X		3612/C280-12 TA
3880	222 liter/13546 cu in	1000	X		3612/C280-12 TA
4700	296 liter/18062 cu in	1000	X		3616/C280-16 TA
5200	296 liter/18062 cu in	1000	X		

\*\*Individual components are MCS approved.

For emissions information, please contact your local Cat dealer.

## 60 Hz Marine Generator Sets

kWe @ .8pf	MCS Approved**	rpm	Model #
970	X	900	6 M 20 C
1290	X	900	8 M 20 C
1450	X	900	9 M 20 C
1710	X	720	6 M 25 C
1800	X	720	6 M 25 C
2200	X	720	8 M 25 C
2400	X	720	8 M 25 C
2480	X	720	9 M 25 C
2700	X	720	9 M 25 C
2765*	X	600	6 M 32 C
2880*	X	600	6 M 32 C
3686*	X	600	8 M 32 C
3840*	X	600	8 M 32 C
4147*	X	600	9 M 32 C
4320*	X	600	9 M 32 C
5530*	X	720	12 M 32 C
7373*	X	720	16 M 32 C

Generator efficiency: 0.95, cos  $\phi$  0.8

\*Generator efficiency: 0.96, cos  $\phi$  0.8

\*\*Individual components are MCS approved

For emissions information, please contact  
your local Cat Dealer

## 50 Hz Marine Generator Sets

kWe @ .8pf	MCS Approved**	rpm	Model #
1080	X	1000	6 M 20 C
1445	X	1000	8 M 20 C
1625	X	1000	9 M 20 C
1760	X	750	6 M 25 C
1880	X	750	6 M 25 C
2280	X	750	8 M 25 C
2500	X	750	8 M 25 C
2570	X	750	9 M 25 C
2820	X	750	9 M 25 C
2765*	X	600	6 M 32 C
2880*	X	600	6 M 32 C
3686*	X	600	8 M 32 C
3840*	X	600	8 M 32 C
4147*	X	600	9 M 32 C
4320*	X	600	9 M 32 C
5760*	X	750	12 M 32 C
7680*	X	750	16 M 32 C

Generator efficiency: 0.95, cos  $\phi$  0.8

\*Generator efficiency: 0.96, cos  $\phi$  0.8

\*\*Individual components are MCS approved.

For emissions information, please contact  
your local Cat dealer.





**At the end of the day,  
it's about getting the  
job done.**

Caterpillar marine generator sets provide the power you work with and live by. So everything about them is built to help you do your job, whether that means bringing in a catch or cargo, or simply providing a pleasurable day on the water.

- ò Caterpillar marine generator sets are manufactured in ISO 9001 certified facilities.
- ò Rugged construction and advanced design provide longer service life to overhaul.
- ò Caterpillar Marine Power is your single source for auxiliary and propulsion engines.
- ò Multiple ratings are offered to meet your vessel's electrical power needs.
- ò Caterpillar marine generator sets are approved by major marine classification societies.
- ò All Cat generator sets are fully engineered with robust base mounting for ease of installation in the vessel engine room.
- ò World-class service and financing is available from your Caterpillar marine dealer.
- ò Caterpillar worldwide parts network provides unmatched parts availability.
- ò All components are supported by Caterpillar.

It's all about getting the job done and, when the time comes, getting to port safely. So it's always a perfect day for the rugged reliability of Caterpillar Marine Power.

## Caterpillar Marine Power Systems

### HEADQUARTERS

**Caterpillar Marine Power Systems**  
Neumühlen 9  
22763 Hamburg/Germany

Phone: +49 40 2380-3000  
Telefax: +49 40 2380-3535

### EUROPE, AFRICA, MIDDLE EAST

**Caterpillar Marine Power Systems**  
Neumühlen 9  
22763 Hamburg/Germany

Phone: +49 40 2380-3000  
Telefax: +49 40 2380-3535

### AMERICAS

**Caterpillar Marine Power Systems**  
3450 Executive Way  
Miramar Park of Commerce  
Miramar, FL. 33025/USA

Phone: +1 954 447 71 00  
Telefax: +1 954 447 71 15

### ASIA-PACIFIC

**Caterpillar Marine Trading (Shanghai) Co., Ltd.**  
25/F, Caterpillar Marine Center  
1319, Yan'an West Road  
200050 Shanghai, P.R. China  
Phone: +86 21 62262200  
Telefax: +86 21 62264500

**Caterpillar Marine Asia Pacific Pte Ltd**  
14 Tractor Road  
Singapore 627973/  
Singapore  
Phone: +65 68287-600  
Telefax: +65 68287-624

For more information please visit [www.mak-global.com](http://www.mak-global.com) or [www.cat-marine.com](http://www.cat-marine.com)

LED4876-05

Materials and specifications subject to change without notice.  
CAT, CATERPILLAR, their respective logos, ACERT, iCaterpillar Yellow and the POWER EDGE trade dress, as well as corporate and product identity used herein, are trademarks of Caterpillar and may not be used without permission.

©2008 Caterpillar

All rights reserved.

Printed in U.S.A.

